

Park and Retention Area

6,382 SF	6,382 SF	6,382 SF	6,382 SF	6,382 SF	6,383 SF	6,383 SF	6,383 SF
151.97'	151.97'	151.97'	151.97'	151.97'	151.97'	151.97'	151.97'
Lot 24 3234	Lot 23 3240	Lot 22 3246	Lot 21 3306	Lot 20 3312	Lot 19 3318	Lot 18 3324	Lot 17 3330
42.00'	42.00'	42.00'	42.00'	42.00'	42.00'	42.00'	42.00'

VILLAGE GREEN FIFTH ADDITION		21	22
203.80'	13,467 SF	5	35' UTILITY EASEMENT
Lot 16 3336	Lot 15 3342	Lot 14 3348	Lot 13 3400
SOLD Reliance 2	SOLD Lancaster	SOLD Reliance 2	SOLD Trenton
71.85'	66.00'	66.00'	66.00'
204.58'	95.86'		

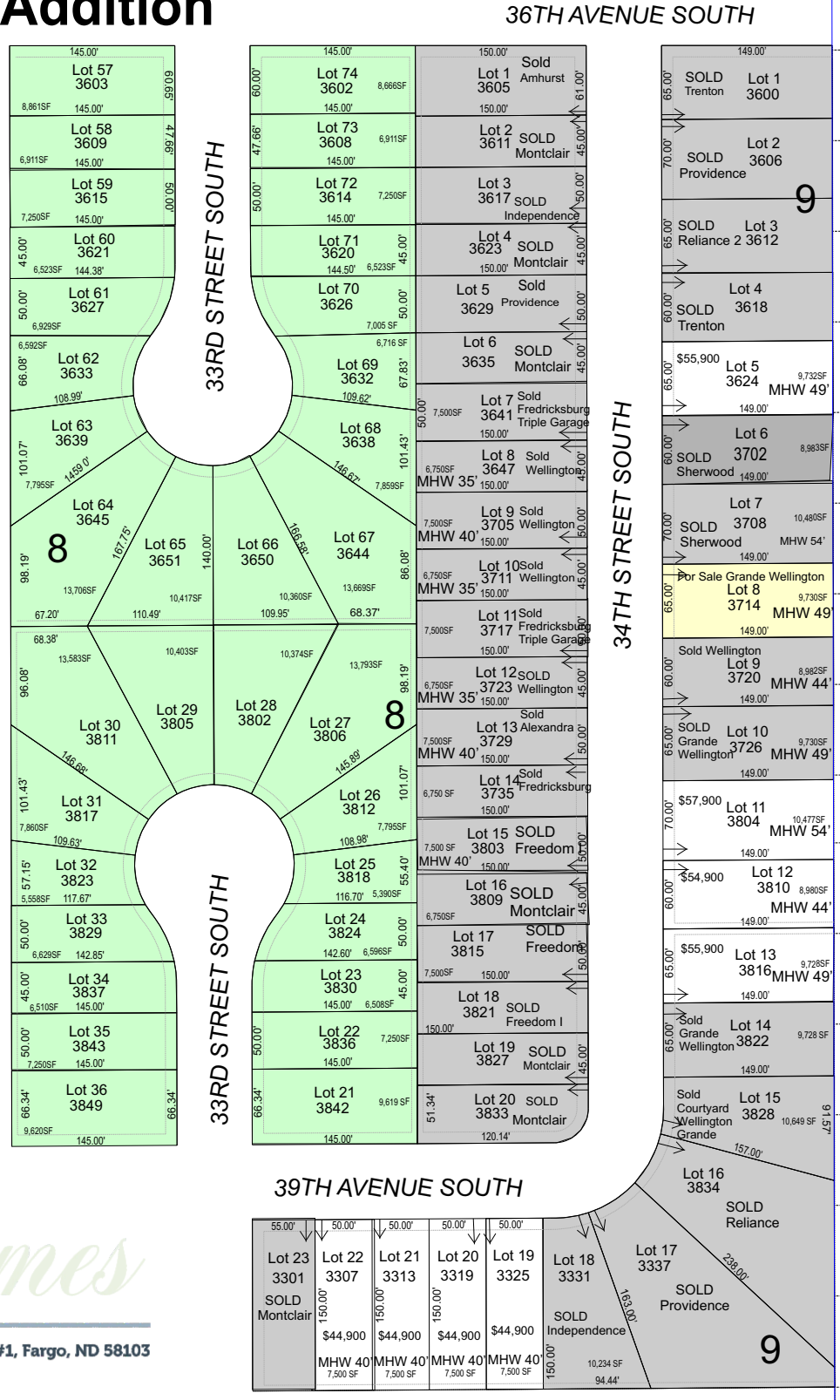
WESTMOOR GREENS
3
4
5

Village Green 6th Addition (South)

- For Sale Lot
- Sold Home
- For Sale Home
- Model Home
- Planned Homes
- Future Phases
- Straw Lot (Available for Winter Starts)
- On Hold

Fully Sodded Yards are included.

8-19-2024



WESTMOOR GREENS
1
2
3
4
5
6
7
8
9



701-237-0510 | Eid-Co.com | 1701 32nd Ave S, Suite #1, Fargo, ND 58103

40TH AVENUE SOUTH