



### Overview:

- 2,011 sqft
- 3 bedrooms
- 2 1/2 baths
- Loft
- Study

Thurman Homes' philosophy is to build affordable, efficient and sustainable homes that offer opportunity to a range of buyers. They build in Whisper Valley, Austin's premier sustainable community, providing zero net energy capable homes.



## PLAN 2011



Elevation A

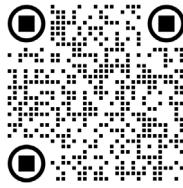


Elevation B

[ThurmanHomesTexas.com](https://ThurmanHomesTexas.com)

[info@ThurmanHomesTexas.com](mailto:info@ThurmanHomesTexas.com)

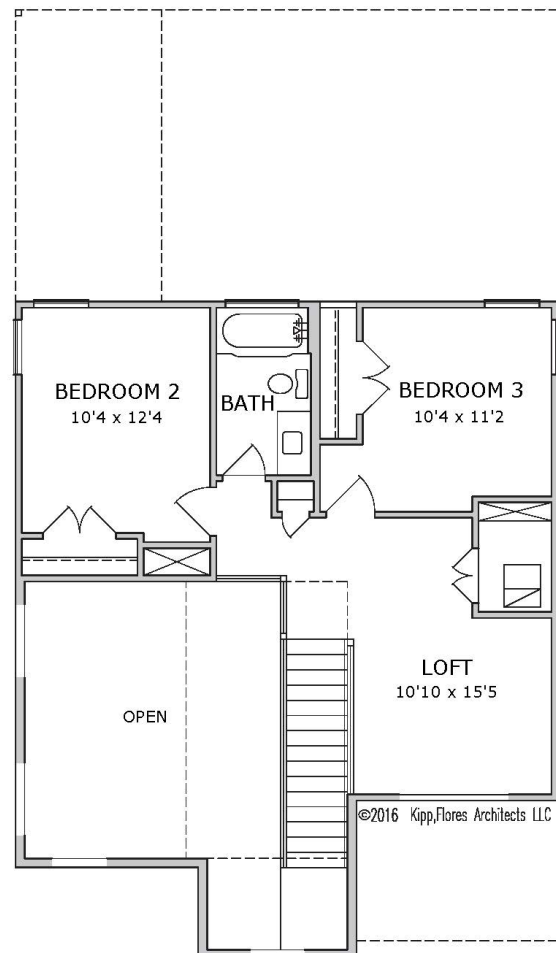
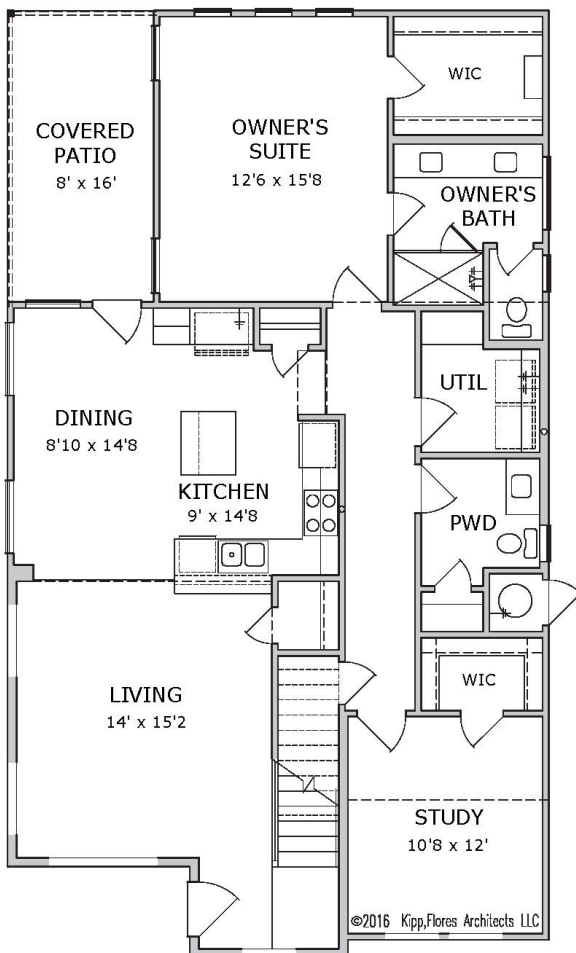
(512) 925-4647



Details that make the difference:

- All metal interior and exterior railings per plan
- Refrigerator included with the appliance package
- Covered patio
- 3/4-inch casings and baseboards with no quarter-round
- Main level Owner's Suite and Study
- Soft-close cabinet drawers and doors
- Designer selections from Camille Carpenter, owner of CC Studios

## PLAN 2011



Thurman Homes reserves the right to adjust plans and specifications to provide the best possible product.  
Dimensions, images and footages provided herein are preliminary and may not reflect final plans.



[ThurmanHomesTexas.com](http://ThurmanHomesTexas.com)

[info@ThurmanHomesTexas.com](mailto:info@ThurmanHomesTexas.com)

**(512) 925-4647**